

# Product Range

COMPOSITE PRODUCTS | TACTILE SURFACES | SAFETY GATES | RAILWAY SYSTEMS | FLEX IMPACT



<b>Anti-Slip</b>	<b>03 - 04 - 05</b>
.....	
Low Profile - Flat Sheet	
Low Profile - Cleat	
Standard Thickness - Flat Sheet	
Stair Tread & Landing Cover	
Stair Nosing	
Ladder Rung Cover	
Plywood Resin Coated Board	
<b>Grating Systems Moulded &amp; Pultruded</b>	<b>06 - 07</b>
.....	
Moulded - Concave	
Moulded - Gritted	
Moulded - Covered & Gritted	
Moulded - Micromesh	
Moulded - Conductive & Translucent Types	
Moulded - Screwjack Pedestal Support System	
Pultruded - Open	
Pultruded - Open - Gritted	
Pultruded - Covered & Gritted	
<b>Pultruded Sections and Structures</b>	<b>08 - 09</b>
.....	
Section Types	
Stairs	
Gates Fences & Grilles	
Platforms	
Fixed Access Ladders	
<b>Hand Rail Systems</b>	<b>10</b>
.....	
Round Section	
Profiled Top Square Section	
<b>Tactile Surfaces</b>	<b>11</b>
.....	
Blister Pedestrian Crossing	
Blister Platform Edge Off Street	
Corduroy	
Guidance Path	
Shared Cycle Track	
Epoxy Adhesive	
Polyurethane Adhesive	
<b>Safety Gates</b>	<b>12</b>
.....	
Single Bar Gate	
Double Bar Gate	
<b>Flex Impact</b>	<b>12 - 13</b>
.....	
Handrail HD Light & HD Mezza	
Handrail HP Plus	
Traffic Barrier TB 200, 400 & 550	
Traffic Barrier TB Plus	
Traffic Barrier TB Mini	
Traffic Barrier Multi Rail - TB Double,	
Double Super & Triple Super	
Bollard	
Goal Post	
Rack Protector RP	
Rack End Protector RE	
Column Protection: KP Protector & Universal	
Corner Protector CP	
Swing Gate & Sliding Gate	
<b>Railway Systems</b>	<b>14 - 15</b>
.....	
Everdeck Panels	
Overlay Panels	
Platform Repair Boards	
Trestle System	
Overline Bridge Steps & Walkways	
Access Platforms & Ramps	
Handrail Systems	
Gated Access Steps	
Through Colour Nosing Tread Cover	
Catch Pit Cover	
GRP Ballast Panels / Boards	

Evergrip is a privately owned company formed in 2001 as a manufacturer and supplier of Anti-slip flooring surfaces for industrial & public access areas. Since that time, the business has expanded to include the manufacture, import/export and installation of a broad range of safe access products made predominantly from composite materials:

- Anti-slip flooring surfaces
- Moulded and pultruded gratings
- Safety handrails
- Pultruded sections and access structures
- Tactile paving surfaces
- Safety gates
- Railway platform solutions
- Flexible impact barriers

**We are able to provide our clients with a turnkey service:**

- Site surveys with no obligation
- Technical advice
- Design
- Drawings & specification
- Product development
- Engineering verification
- Fabrication and installation

Evergrip are established within the UK and Europe as a leading supplier to well known distribution and inventory management organisations. Selling the success of high quality products through both direct business and strategic partners into varied market sectors, including manufacturing/industrial plants, local government and infrastructure projects has resulted in steady and consistent growth.

We currently operate from two business units located in close proximity in Selby, North Yorkshire, United Kingdom. We also have a sister company based in Warsaw, Poland.





# Highly durable Anti-slip GRP sheets & profiles. Retro-fit to all types of walkway surface.

Evergrip manufacture, import and install a comprehensive range of Anti-slip flooring surfaces suitable for all industrial and commercial environments.

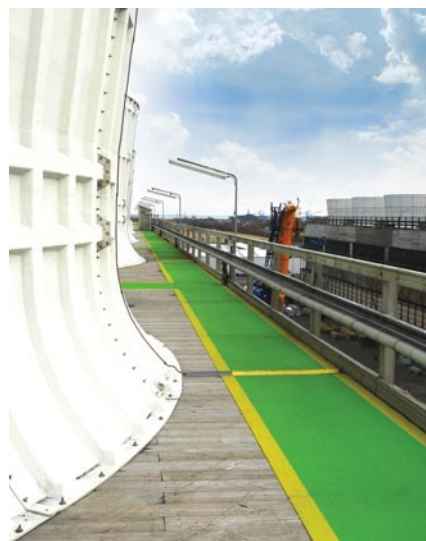
The range offers high visibility options and is impervious to most environmental conditions making it suitable for both internal and external use, in and around the workplace.

The products have been developed to comply with relevant safety standards and regulations with some designed to help meet the requirements of Equality Act legislation. All will reduce or completely remove hazardous slippery conditions; improve the safety of personnel, the general public and reduce the likelihood of unnecessary accidents.

All types are made from a composite of Glass Reinforced Polymer (GRP) substrates & polyester resins. Incorporated into the surface structure are granules of refined aluminium oxide which provide the unique characteristic durability & high levels of slip resistance.

### Typical installation scenarios include:

- Factory production line walkways
- Pedestrian bridge or underpass steps and walkways
- Worker access to machinery
- Marina gangways
- Covering steel chequer plate or grid steps
- Covering wooden or concrete steps
- Board walks
- Tiled surfaces
- Ladder rungs



### Low Profile - Flat Sheet

Designed to be fixed with adhesive to all substrate types in sound condition, Low Profile Anti-slip can be laid onto undulating surfaces and walkways where Standard thickness sheeting may not be suitable. The preferred choice over tapes and paints, it offers an almost permanent solution to slip hazards.



**Low Profile - Cleat**

A tough GRP tread or step cover measuring 600 x 150mm. A coating combination of premium quality aluminium oxide & resin components, make up a highly effective Anti-slip product that will withstand the rigours of all industrial and commercial environments.



**Standard Thickness - Flat Sheet**

The preferred choice over tapes and paints, offering an almost permanent solution to slip hazards. The product can be laid and fixed using a combination of adhesive/sealant and fasteners to effectively fix, bond and seal the edges, preventing any ingress of moisture.



**Stair Tread & Landing Cover**

Designed specifically to reduce the risk of slipping on steps, stairways and landings. The versatility of the covers mean they can be used even where there is minor damage or deterioration to an existing surface.



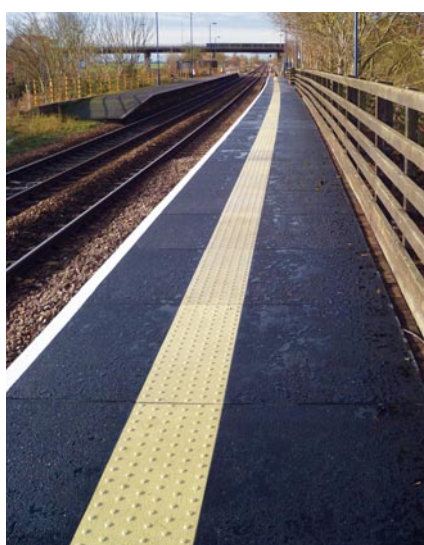
### Stair Nosing

Specifically designed to reduce the risk of slipping on step edges. Stair Nosings are a highly effective and durable Anti-slip surface that will withstand the rigours of all industrial and commercial environments.



### Ladder Rung Cover

Reduces the risk of slipping on metal, wooden and fibreglass ladder rungs. They are a hard wearing and a highly effective solution especially in wet conditions. The product range features a choice of two profile shapes with a range of common sizes to suit most industrial ladders.



### Plywood Resin Coated Board

Based on premium quality birch ply or marine grade products and sourced exclusively from FSC & PEFC certified suppliers. Boards are coated in a combination of refined aluminium oxide and resin components to achieve a durable Anti-slip surface.

# High strength, durable and lightweight industrial gratings; providing maintenance free reliability in all environments.

Glass reinforced polymer (GRP) gratings offer an attractive combination of mechanical & physical properties and are a proven, ideal replacement for steel & aluminium gratings. They are available in a wide variety of structural, chemical and dimensional variants making them suitable for installations in all industrial & commercial environments.

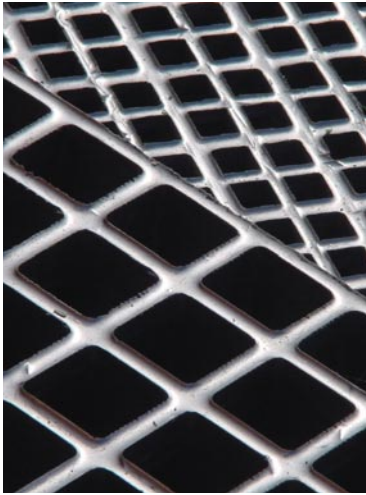
#### All types exhibit key product features & benefits:

- Strong & durable - excellent loading ability
- Non corroding - no issues with rust, maintenance free, low life-cycle costs
- Impact resistant - will not crack or chip, maintains appearance
- Fire retardant - choice of resin type to meet required performance
- Chemical resistant - choice of options to suit all environments
- Low electrical & thermal conductivity - ideal near electrical installations
- Anti-slip surfaces - reduction in slip related accidents
- Relative light weight - reduced transport costs and load on existing structures
- Easy handling, fabrication & assembly - no welding

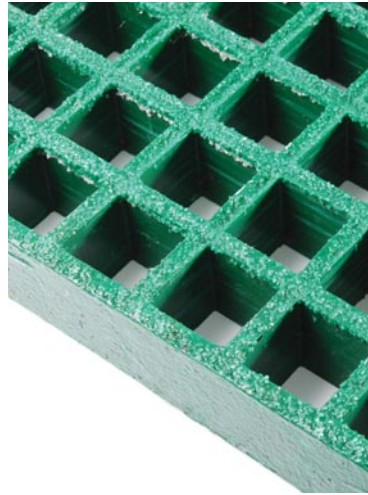
GRP Gratings are produced by two distinct manufacturing processes to offer either Moulded or Pultruded variants. Both types are composite products and combine fibreglass strands with thermosetting resins to form extremely strong panel structures. These two complimentary materials give GRP gratings excellent compressive and tensile strength.

#### Typical installation scenarios include:

- Access platform walkways
- Pedestrian bridges, steps and walkways
- Worker access to machinery
- Marina gangways
- Replacements for steel chequer plate or grid steps
- Replacements for wooden steps
- Marine vessel applications
- Water treatment works
- Offshore wind & oil facilities



**Moulded - Concave**



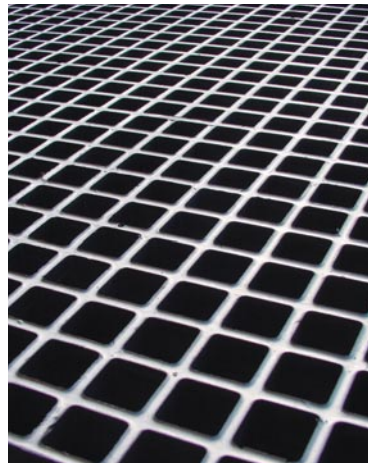
**Moulded - Gritted**



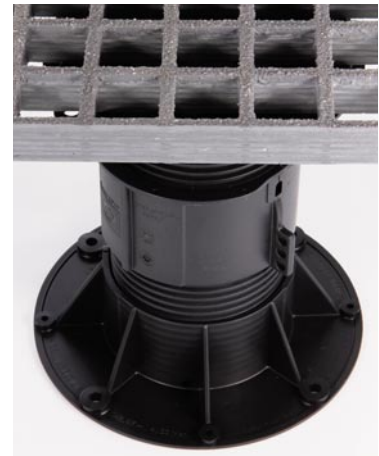
**Moulded - Covered & Gritted**



**Moulded - Micromesh Gritted**



**Moulded - Conductive  
& Translucent Types**



**Screwjack Pedestal  
Support System**



**Pultruded - Open**



**Pultruded - Open - Gritted**



**Pultruded - Covered & Gritted**

# A versatile range of GRP pultruded structural sections to standard EN13706 E17 or E23, offering a wealth of construction opportunities.

Glass Reinforced Polymer (GRP) pultruded sections are light in weight, very strong, maintenance free and suitable for a broad range of applications. They make an ideal replacement for traditionally used materials like concrete, steel, aluminium and wood.

A smooth finished surface provides a long life with the material offering a cost efficient and sustainable solution to many design requirements.

Pultrusion is a continuous process used in the production of composite profiles with constant cross sections and material properties.

Now in use for more than 50 years, the technology ensures consistently high quality is reproduced in every production run. Densely packed continuous fibreglass rovings and matting are pulled by process machinery through a bath of resin and then on through a high temperature and high pressure mould which forms and cures the finished section shape. Finally the sections are automatically cut to the desired length.

The type and shape of the finished product is determined by the design of the mould.

Stock sections are offered in most commonly used structural shapes and through carefully selected, quality assured manufacturing sources, access to a wider range of shapes and sizes is available. We also welcome enquiries for new moulds and profiles to be made.

We are able to offer a complete fabrication and delivery/installation service for most types of access structures; underpinned by engineering drawings and data when required.

#### Typical profiles include:

Angle | Box | C-Section | Flat | I-Beam | Wide Flange  
Beam Round Tube | Plank | Hand Rail | Ladder Rung

Suitable for all industrial and commercial environments, GRP pultrusions are typically used to construct safe access structures such as stairways, walkways & platforms.

All systems are designed to comply with relevant standards e.g. Eurocomp Design Code & BS 4592, providing versatile and cost effective solutions.

#### Features & benefits:

- **STRONG & DURABLE** Load tested for safety
- **NON CORRODING** No issues with rust, virtually maintenance free, low life-cycle costs
- **IMPACT RESISTANT** Will not crack or chip
- **UV RESISTANT** Maintains structural integrity after long service
- **FIRE RETARDANT** Plus a choice of resin type to meet any requirement
- **CHEMICAL RESISTANT** Resists a wide variety of chemicals - suits most environments
- **LOW ELECTRICAL & THERMAL CONDUCTIVITY** Ideal near electrical installations or in extreme cold
- **LIGHT WEIGHT** Reduced transport costs and load on existing structures
- **EASY HANDLING, FABRICATION & ASSEMBLY** No welding, TCT tools for cutting

#### Typical installation scenarios include:

- Access platform walkways
- Pedestrian bridges, steps & walkways
- Worker access to machinery
- Marina gangways
- Replacements for steel chequer plate or grid steps
- Replacements for wooden steps
- Marine vessel applications
- Water treatment works
- Offshore wind & oil facilities





**Section Types**



**Stairs**



**Gates Fences & Grilles**



**Platforms**



**Fixed Access Ladders**



Suitable for all industrial and commercial environments, GRP handrails are used for stairways, walkway / platform handrails and for guarding around machinery.

The systems are designed to comply with all relevant standards and provide a versatile, cost effective alternative to metal rails.

Offered with a choice of two, high quality systems: **Round Section** and **Profiled Top Square Section**, both types are available with all necessary fittings and fasteners for assembly and follow the same basic design principles:

- Upright support sections (stanchions)
- Top hand rail
- Mid knee rail
- Kicker toe plate
- Floor or wall (side mount) fixing brackets
- A range of fittings & connectors
- Fasteners & fixings

**Features & benefits:**

- **STRONG & DURABLE** Load tested for safety
- **NON CORRODING** No issues with rust, virtually maintenance free, low life-cycle costs
- **IMPACT RESISTANT** Will not crack or chip
- **UV RESISTANT** Maintains structural integrity after long service
- **FIRE RETARDANT** Plus a choice of resin type to meet any requirement
- **CHEMICAL RESISTANT** Resists a wide variety of chemicals - suits most environments
- **LOW ELECTRICAL & THERMAL CONDUCTIVITY** Ideal near electrical installations or in extreme cold
- **LIGHT WEIGHT** Reduced transport costs and load on existing structures
- **EASY HANDLING, FABRICATION & ASSEMBLY** No welding, TCT tools for cutting

**Typical installation scenarios include:**

- Access platform walkways
- Pedestrian bridges, steps & walkways
- Worker access to machinery
- Marina gangways
- Replacements for steel chequer plate or grid steps
- Replacements for wooden steps
- Marine vessel applications
- Water treatment works
- Offshore wind & oil facilities



**Round Section**



**Profiled Top Square Section**



**Blister Pedestrian Crossing**



**Blister Platform Edge Off Street**



**Corduroy**



**Guidance Path**



**Shared Cycle Track**



**Epoxy Adhesive**

## Surface mounted tactile paving provides guidance and warning for visually impaired persons

Surface mounted tactile paving systems offer significant advantages over traditionally used concrete materials in both longevity and cost of installation. They provide a fast, easy and economical solution to achieve compliance with the Equality Act 2010.

With no excavation required, installation takes a fraction of the time it would to lay concrete pavers. Tests have shown the tiles are significantly harder wearing (up to 7 times) and crucially, as they remain permanently flexible, are not subject to freeze/thaw fracturing and spalling.



**Polyurethane Adhesive**



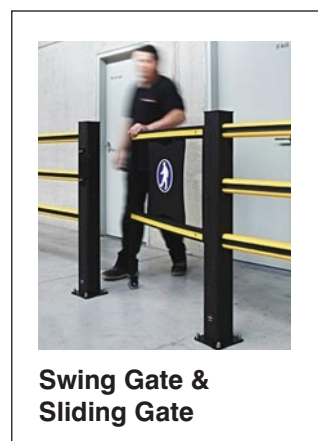
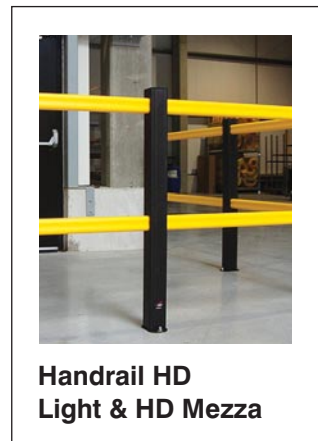
Safety Gates provide robust and reliable fall protection for ladderway openings and platforms.

**Conforming to EN 14122-3 & EN 14122-4 with simple, functional design features including:**

- One way opening, gravity self-closing mechanism, maintenance free, high visibility safety yellow, non-corroding, very strong construction, long life, simple to install
- Safety Gates are available in either Double or Single Bar configuration
- Choice of 4 standard lengths
- Product can be cut to the exact required length for installation
- Gates are pre-configured at the factory with either left swing or right swing opening
- All products are shipped boxed & pre-assembled complete with required fasteners and installation instructions

**Typical installation scenarios include:**

- Cage ladders
- Fire escape ladders
- Working platforms
- Access to machinery





**Handrail HP Plus**



**Traffic Barrier TB 200, 400 & 550**



**Traffic Barrier TB Plus**



**Traffic Barrier Multi Rail - TB Double, Double Super & Triple Super**



**Bollard**



**Goal Post**



**Rack End Protector RE**



**Column Protection: KP Protector & Universal**



**Corner Protector CP**

An extremely tough, multi-product, flexible barrier system offering all-round protection of people and assets.

Flex Impact offers a comprehensive range of innovative flexible barrier products suitable for all industrial and commercial environments. A wide variety of applications include the segregation of pedestrians and vehicular traffic and the protection of storage or machinery assets from accidental impact damage.

Component parts are manufactured from a highly durable synthetic polymer derivative. The material has great resilience, yet is elastic in nature and absorbs the energy from impacts, before returning to its original form. These properties make it an ideal, low maintenance choice; offering significant cost savings over metal or wooden barriers.

# A comprehensive range of rapid fit, durable solutions for improvement and refurbishment across the railway infrastructure.

Meeting the varied demands placed from many parts of the railway infrastructure is a significant sector of our business. Products and materials need to be carefully designed and selected to offer safety, durability, long life and be cost efficient.

**Factors influencing the procurement process will likely include:**

- Safety critical applications
- Special wear and loading characteristics
- Resistance to extreme climatic conditions
- Maintenance requirements

**Composites**

Composite materials are now a common choice to meet or exceed these criteria and by virtue of their physical and mechanical properties, represent an excellent investment with low lifecycle costs and long term value.

Working closely with designers, engineers and contractors alike, Evergrip offer a wide variety of high quality GRP solutions to fit these requirements. Our products are designed and installed to comply with all relevant BS and EN codes including BS 4592.

- Platform decking, repair products and substructures
- Stair treads
- Hand rail systems
- Surface mounted tactile paving
- Anti-slip walkway surfaces
- Facilities/inspection/maintenance access platforms
- Platform access ramps
- Staircases & gates
- Catchpit covers
- Ballast panels / boards
- Infill panels
- Trench/trough covers



**Trestle System**



**Gated Access Steps**



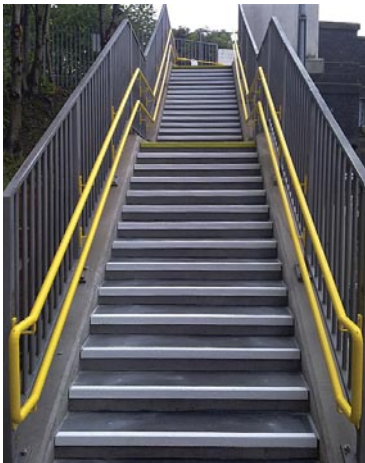
**Everdeck Panels**



**Overlay Panels**



**Platform Repair Boards**



**Overline Bridge Steps  
& Walkways**



**Access Platforms & Ramps**



**Handrail Systems**



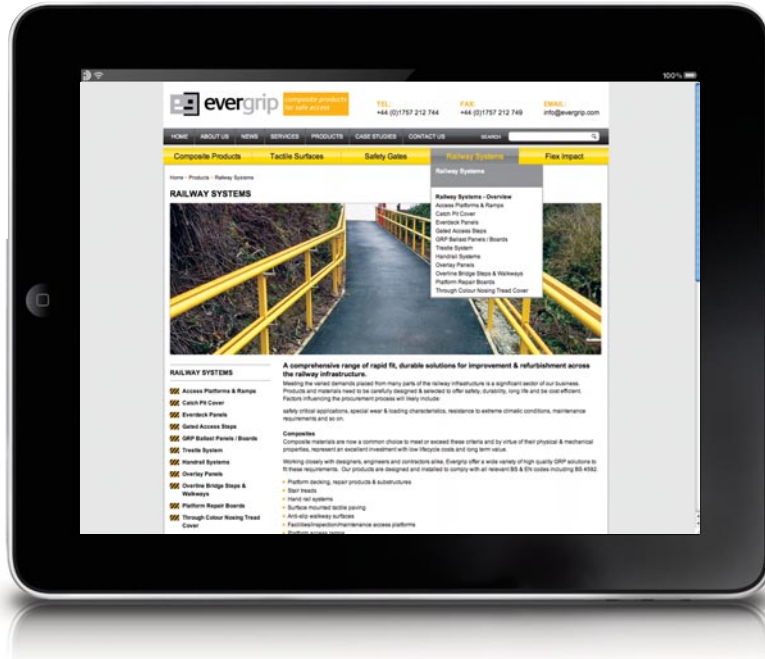
**Through Colour Nosing  
Tread Cover**



**Catch Pit Cover**



**GRP Ballast Panels / Boards**



View our entire range of specialist composite products  
[www.evergrip.com](http://www.evergrip.com)



Evergrip Limited, Flaxley Road, Selby, North Yorkshire YO8 4BG

Tel: +44 (0)1757 212744

Email: [info@evergrip.com](mailto:info@evergrip.com)

Web: [www.evergrip.com](http://www.evergrip.com)

Fax: +44 (0)1757 212749

Skype: evergrip.limited